

Albert André, French, 1869-1954

*Grapes, Melons and Figs*, 1912

Oil on canvas

43.5 × 55.2 cm (17 1/8 × 21 3/4 in.)

frame: 60.6 × 72.4 × 5.7 cm (23 7/8 × 28 1/2 × 2 1/4 in.)

The Phillips Collection, Washington, DC, Acquired 1920



Milton Avery, American, 1885-1965

*Pink Still Life*, 1938

Oil on cardboard

38.1 × 55.9 cm (15 × 22 in.)

frame: 50.8 × 67.3 × 5.4 cm (20 × 26 1/2 × 2 1/8 in.)

The Phillips Collection, Washington, DC, Acquired 1943



Milton Avery, American, 1885-1965

*Gladiolus*, 1940

Oil on canvas

66 × 86.4 cm (26 × 34 in.)

frame: 85.1 × 105.1 × 7.6 cm (33 1/2 × 41 3/8 × 3 in.)

The Phillips Collection, Washington, DC, Acquired 1943



Milton Avery, American, 1885-1965

*Pine Cones*, 1940

Oil on canvas

71.1 × 91.4 cm (28 × 36 in.)

frame: 78.7 × 99.1 × 7.9 cm (31 × 39 × 3 1/8 in.)

The Phillips Collection, Washington, DC, Acquired 1943



Milton Avery, American, 1885-1965

*Milk Pitcher*, 1949

Oil on canvas board

40.6 × 50.8 cm (16 × 20 in.)

frame: 59.4 × 69.8 × 5.1 cm (23 3/8 × 27 1/2 × 2 in.)

The Phillips Collection, Washington, DC, Gift of Lawrence Kirstein, 1995



Pierre Bonnard, French, 1867-1947

*Bowl of Cherries*, 1920

Oil on canvas

30.2 × 41.9 cm (11 7/8 × 16 1/2 in.)

frame: 54 × 66 × 7 cm (21 1/4 × 26 × 2 3/4 in.)

The Phillips Collection, Washington, DC, Gift of Marion L. Ring Estate, 1987



Georges Braque, French, 1882-1963  
*Still Life with Grapes and Clarinet*, 1927  
Oil on canvas  
54 × 73 cm (21 1/4 × 28 3/4 in.)  
frame: 80 × 98.4 × 10.8 cm (31 1/2 × 38 3/4 × 4 1/4 in.)  
The Phillips Collection, Washington, DC, Acquired 1929



Georges Braque, French, 1882-1963  
*Pot d'Étain et Assiette de Fruits*, 1944  
Oil on canvas  
34.9 × 64.8 cm (13 3/4 × 25 1/2 in.)  
frame: 55.7 × 85.7 × 8.9 cm (21 15/16 × 33 3/4 × 3 1/2 in.)  
The Phillips Collection, Washington, DC, Gift of Gertrude Dunn Davis, 1990



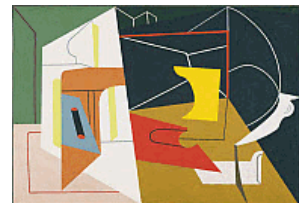
Paul Cézanne, French, 1839-1906  
*Ginger Pot with Pomegranate and Pears*, 1893  
Oil on canvas  
46.4 × 55.6 cm (18 1/4 × 21 7/8 in.)  
frame: 70.8 × 80 × 10.2 cm (27 7/8 × 31 1/2 × 4 in.)  
The Phillips Collection, Washington, DC, Gift of Gifford Phillips in memory of his father, James Laughlin Phillips, 1939



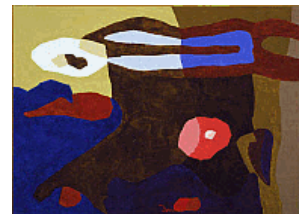
Jean Charlot, French, 1898-1979  
*Glass, Cup and Dice*, 1925  
Oil on canvas  
35.6 × 27.9 cm (14 × 11 in.)  
frame: 42.9 × 35.2 × 4.8 cm (16 7/8 × 13 7/8 × 1 7/8 in.)  
The Phillips Collection, Washington, DC, Acquired by 1930



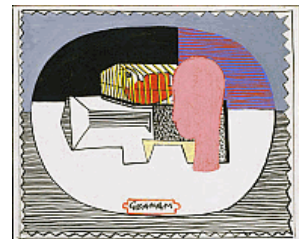
Stuart Davis, American, 1894-1964  
*Egg Beater No. 4*, 1928  
Oil on canvas  
68.9 × 97.2 cm (27 1/8 × 38 1/4 in.)  
frame: 73.3 × 101.3 × 4.4 cm (28 7/8 × 39 7/8 × 1 3/4 in.)  
The Phillips Collection, Washington, DC, Acquired 1939



Arthur Dove, American, 1880-1946  
*Rose and Locust Stump*, 1943  
Wax emulsion on canvas  
61 × 81.3 cm (24 × 32 in.)  
frame: 61 × 81.3 × 4.4 cm (24 × 32 × 1 3/4 in.)  
The Phillips Collection, Washington, DC, Acquired 1944



John D. Graham, American, born Russia, 1887-1961  
*Bird Cage*, 1931  
Oil on canvas  
55.9 × 66 cm (22 × 26 in.)  
frame: 67.9 × 78.7 × 5.7 cm (26 3/4 × 31 × 2 1/4 in.)  
The Phillips Collection, Washington, DC, Acquired 1931



John D. Graham, American, born Russia, 1887-1961  
*Blue Still Life*, 1931  
Oil on canvas  
65.1 × 91.8 cm (25 5/8 × 36 1/8 in.)  
frame: 84.8 × 108.6 × 6.7 cm (33 3/8 × 42 3/4 × 2 5/8 in.)  
The Phillips Collection, Washington, DC, Acquired 1942



Morris Graves, American, 1910-2001  
*August Still Life*, 1952  
Oil on canvas mounted on hardboard  
121.9 × 103.5 cm (48 × 40 3/4 in.)  
frame: 126.4 × 107.9 × 5.7 cm (49 3/4 × 42 1/2 × 2 1/4 in.)  
The Phillips Collection, Washington, DC, Acquired 1954



Juan Gris, Spanish, 1887-1927  
*Still Life with Newspaper*, 1916  
Oil on canvas  
73.7 × 60.3 cm (29 × 23 3/4 in.)  
frame: 82.9 × 95.9 × 9.5 cm (32 5/8 × 37 3/4 × 3 3/4 in.)  
The Phillips Collection, Washington, DC, Acquired 1950



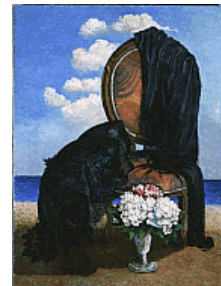
Marsden Hartley, American, 1877-1943  
*Gardener's Gloves and Shears*, ca. 1937  
Oil on canvas board  
40.3 × 50.8 cm (15 7/8 × 20 in.)  
frame: 53.3 × 63.5 × 5.7 cm (21 × 25 × 2 1/4 in.)  
The Phillips Collection, Washington, DC, Acquired 1939



Marsden Hartley, American, 1877-1943  
*Wild Roses*, 1942  
Oil on hardboard  
55.9 × 71.1 cm (22 × 28 in.)  
frame: 82.5 × 96.8 × 7.6 cm (32 1/2 × 38 1/8 × 3 in.)  
The Phillips Collection, Washington, DC, Acquired 1943



Morris Kantor, American, 1896-1974  
*The Black Lace Parasol*, 1931  
Oil on canvas  
100 × 74.9 cm (39 3/8 × 29 1/2 in.)  
frame: 124.8 × 100 × 7.3 cm (49 1/8 × 39 3/8 × 2 7/8 in.)  
The Phillips Collection, Washington, DC, Acquired 1937



Walt Kuhn, American, 1880-1949

*Bread and Knife*, 1934

Oil on canvas

30.5 × 38.4 cm (12 × 15 1/8 in.)

44.4 × 54.6 × 5.4 cm (17 1/2 × 21 1/2 × 2 1/8 in.)

The Phillips Collection, Washington, DC, Acquired 1944



Man Ray, American, 1890-1976

*The Black Tray*, 1914

Oil on canvas

45.7 × 61.6 cm (18 × 24 1/4 in.)

frame: 62.5 × 77.8 × 5.7 cm (24 5/8 × 30 5/8 × 2 1/4 in.)

The Phillips Collection, Washington, DC, Acquired 1927



Alfred Henry Maurer, American, 1868-1932

*Still Life with Artichoke and Bread*, ca. 1929-30

Oil on hardboard

46 × 55.2 cm (18 1/8 × 21 3/4 in.)

frame: 61.6 × 71.8 × 4.4 cm (24 1/4 × 28 1/4 × 1 3/4 in.)

The Phillips Collection, Washington, DC, Acquired 1956



Alfred Henry Maurer, American, 1868-1932

*Still Life with Doily*, ca. 1930

Oil on hardboard

45.4 × 54.6 cm (17 7/8 × 21 1/2 in.)

frame: 59.4 × 68.9 × 3.2 cm (23 3/8 × 27 1/8 × 1 1/4 in.)

The Phillips Collection, Washington, DC, Acquired 1940



William Meyerowitz, American, 1887-1981

*Fruit and Flowers*, not dated [early 1920s]

Oil on canvas

50.8 × 61 cm (20 × 24 in.)

frame: 68.3 × 78.4 × 4.4 cm (26 7/8 × 30 7/8 × 1 3/4 in.)

The Phillips Collection, Washington, DC, Acquired by 1924



Giorgio Morandi, Italian, 1890-1964

*Still Life*, 1953

Oil on canvas

20.3 × 40.3 cm (8 × 15 7/8 in.)

frame: 23.8 × 43.8 × 4.8 cm (9 3/8 × 17 1/4 × 1 7/8 in.)

The Phillips Collection, Washington, DC, Acquired 1954



Jean Négulesco, Romanian-American, 1900-1993

*Still Life*, 1926

Oil on cardboard on wood panel

26.7 × 34.9 cm (10 1/2 × 13 3/4 in.)

frame: 34.3 × 42.5 × 3.5 cm (13 1/2 × 16 3/4 × 1 3/8 in.)

The Phillips Collection, Washington, DC, Acquired by 1930



Ben Nicholson, British, 1894-1982

*St. Ives (Version 2)*, 1940

Oil and graphite pencil on cardboard mounted on cardboard panel

38.4 × 46 cm (15 1/8 × 18 1/8 in.)

frame: 41 × 48.6 × 4.8 cm (16 1/8 × 19 1/8 × 1 7/8 in.)

The Phillips Collection, Washington, DC, Acquired 1958



Ben Nicholson, British, 1894-1982

*Still Life (Winter), November 3, 1950*, 1950

Oil and pencil on hardboard

43.2 × 67.3 cm (17 × 26 1/2 in.)

frame: 46.4 × 70.8 × 4.8 cm (18 1/4 × 27 7/8 × 1 7/8 in.)

The Phillips Collection, Washington, DC, Acquired 1951



Georgia O'Keeffe, American, 1887-1986

*Pattern of Leaves*, 1923

Oil on canvas

56.2 × 45.7 cm (22 1/8 × 18 in.)

frame: 59.7 × 49.5 × 4.4 cm (23 1/2 × 19 1/2 × 1 3/4 in.)

The Phillips Collection, Washington, DC, Acquired 1926



Marjorie Phillips, American, 1894-1985

*Poppies and Cornflowers*, ca. 1922

Oil on canvas

50.5 × 61 cm (19 7/8 × 24 in.)

frame: 70.8 × 83.2 × 3.5 cm (27 7/8 × 32 3/4 × 1 3/8 in.)

The Phillips Collection, Washington, DC, Gift of the artist, 1984



Marjorie Phillips, American, 1894-1985

*The Big Pear*, 1955

Oil on canvas

30.8 × 35.6 cm (12 1/8 × 14 in.)

frame: 45.7 × 51.1 × 6.7 cm (18 × 20 1/8 × 2 5/8 in.)

The Phillips Collection, Washington, DC, Acquired 1955



Pablo Picasso, Spanish, 1881-1973

*Studio Corner*, 1921

Tempera and gouache on paper

21 × 27 cm (8 1/4 × 10 5/8 in.)

frame: 44.4 × 50.2 × 4.1 cm (17 1/2 × 19 3/4 × 1 5/8 in.)

The Phillips Collection, Washington, DC, Acquired 1930



Pablo Picasso, Spanish, 1881-1973

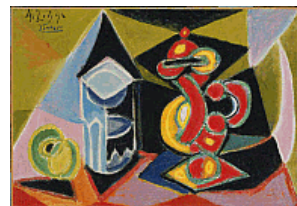
*Still Life with Glass and Fruit*, 1939

Oil on canvas

32.7 × 45.7 cm (12 7/8 × 18 in.)

frame: 55.9 × 68.9 × 6.3 cm (22 × 27 1/8 × 2 1/2 in.)

The Phillips Collection, Washington, DC, Gift of the Carey Walker Foundation, 1994



Georges Rouault, French, 1871-1958

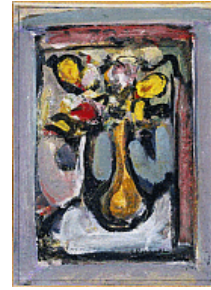
*Bouquet No. 1*, ca. 1938

Oil on metallic foil on paper mounted on cardboard

34.9 × 25.1 cm (13 3/4 × 9 7/8 in.)

frame: 62.2 × 53.3 × 5.4 cm (24 1/2 × 21 × 2 1/8 in.)

The Phillips Collection, Washington, DC, Acquired 1939



Georges Rouault, French, 1871-1958

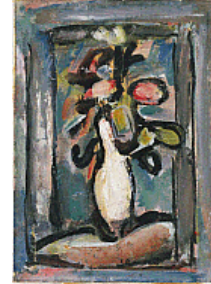
*Bouquet No. 2*, ca. 1938

Oil on newspaper

35.6 × 24.8 cm (14 × 9 3/4 in.)

frame: 64.8 × 56.8 × 5.4 cm (25 1/2 × 22 3/8 × 2 1/8 in.)

The Phillips Collection, Washington, DC, Acquired 1939



Maurice Sterne, American, 1877-1957

*Still Life*, 1925

Oil on canvas

51.1 × 62.9 cm (20 1/8 × 24 3/4 in.)

frame: 66.4 × 76.2 × 5.7 cm (26 1/8 × 30 × 2 1/4 in.)

The Phillips Collection, Washington, DC, Acquired 1926



Max Weber, American, 1881-1961

*Colonial Bowl*, 1936

Oil on canvas

47.6 × 56.2 cm (18 3/4 × 22 1/8 in.)

frame: 60 × 69.2 × 7 cm (23 5/8 × 27 1/4 × 2 3/4 in.)

The Phillips Collection, Washington, DC, Acquired 1941



Harold Weston, American, 1894-1972

*Melon*, 1929

Oil on canvas

46.4 × 38.4 cm (18 1/4 × 15 1/8 in.)

frame: 57.1 × 49.5 × 6 cm (22 1/2 × 19 1/2 × 2 3/8 in.)

The Phillips Collection, Washington, DC, Acquired 1930

